

Integrated Neighbourhood Teams

Bournemouth, Christchurch and Poole Council
Health and Wellbeing Board



Our Ambition

Partners from across Dorset are united in wanting to move towards a more integrated model based around Dorset's communities

Integrated Neighbourhood Team in the context of Place

Our vision

Dorset Integrated Care System works together to deliver the best possible improvements in health and wellbeing

Key priorities

Prevention and early help

Helping you stay well by providing prevention support as early as possible

Thriving communities

Investing in communities, building strong networks and developing high quality spaces in the community where we can work together

Working better together

Consider your needs at all stages of your journey through health and care services

Outcomes



Joined-up health and wellbeing, consider mental and physical health



Invest in and involve informal care and support



Care closer to home



Children's health, and best start in life



Inequality, or 'fairness' in access, outcomes and experience



Social isolation, loneliness



Listen and involve people in solutions



This Programme is focused on the development of Integrated Neighbourhood Teams - building confident and autonomous, integrated multidisciplinary teams around the needs of the population they serve

Our
Dorset

Integrated teams are not a new concept

This is a journey that **BCP Council** have been working on for years.

The **NHS** too, as it builds on: the Clinical Services Review; the Locality model; and Primary Care Networks.

All partners across Dorset are aligned on the ambition and there is an appetite to deliver a real difference for our communities and our teams.

However the **NHS has much work to do to simplify the current fragmentation in its services** and remove the barriers that get in the way of teams working effectively together for the communities they support. This needs to be addressed if it is to work more effectively with partners as part of Integrated Neighbourhood Teams.

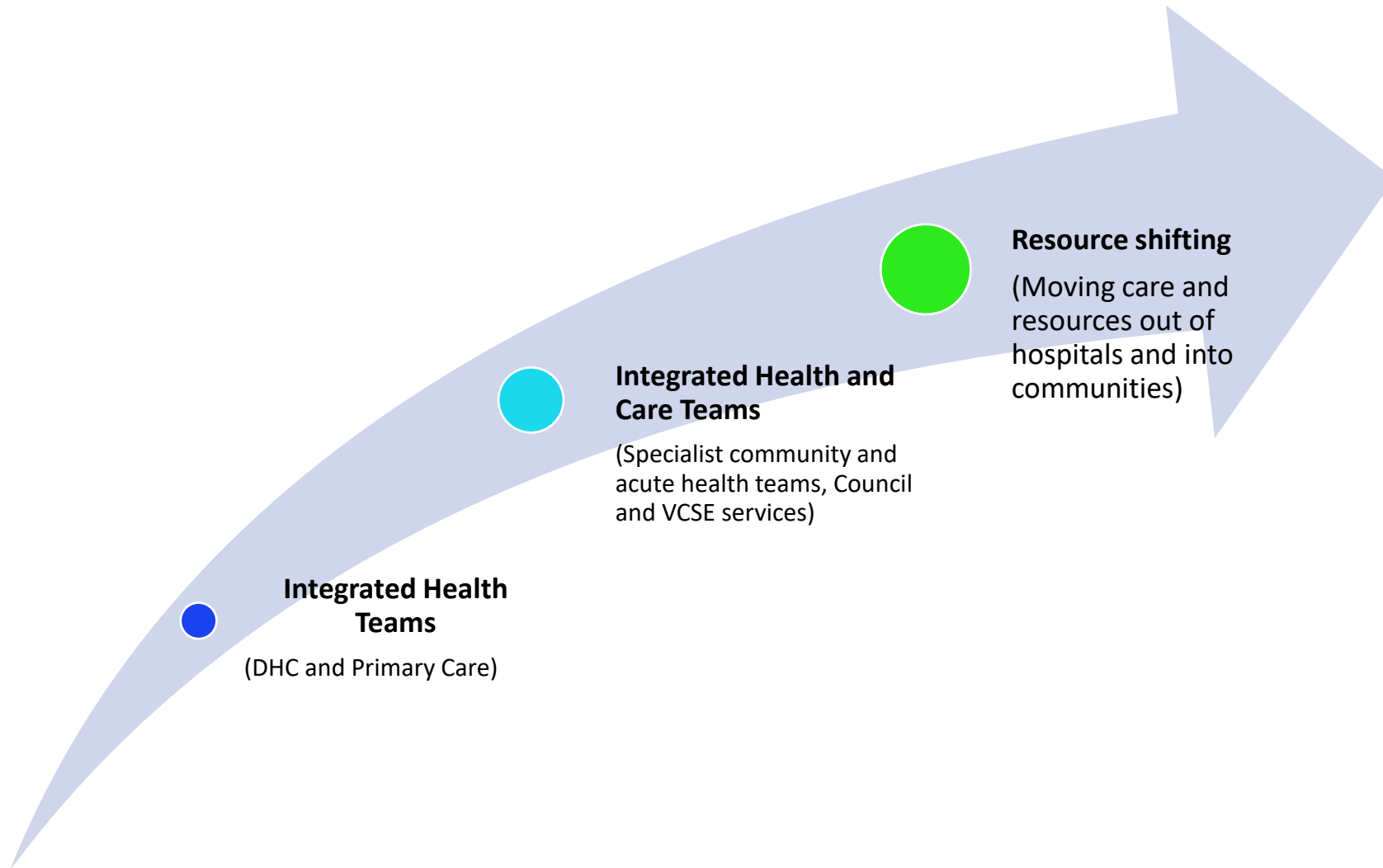
Possible future state
Confident and autonomous integrated team of
teams built around local neighbourhoods



NB The make up of the teams will vary depending on the needs of the local population

**Our
Dorset**

Integrated Neighbourhood Team Development Journey



Programme scope for 24/25

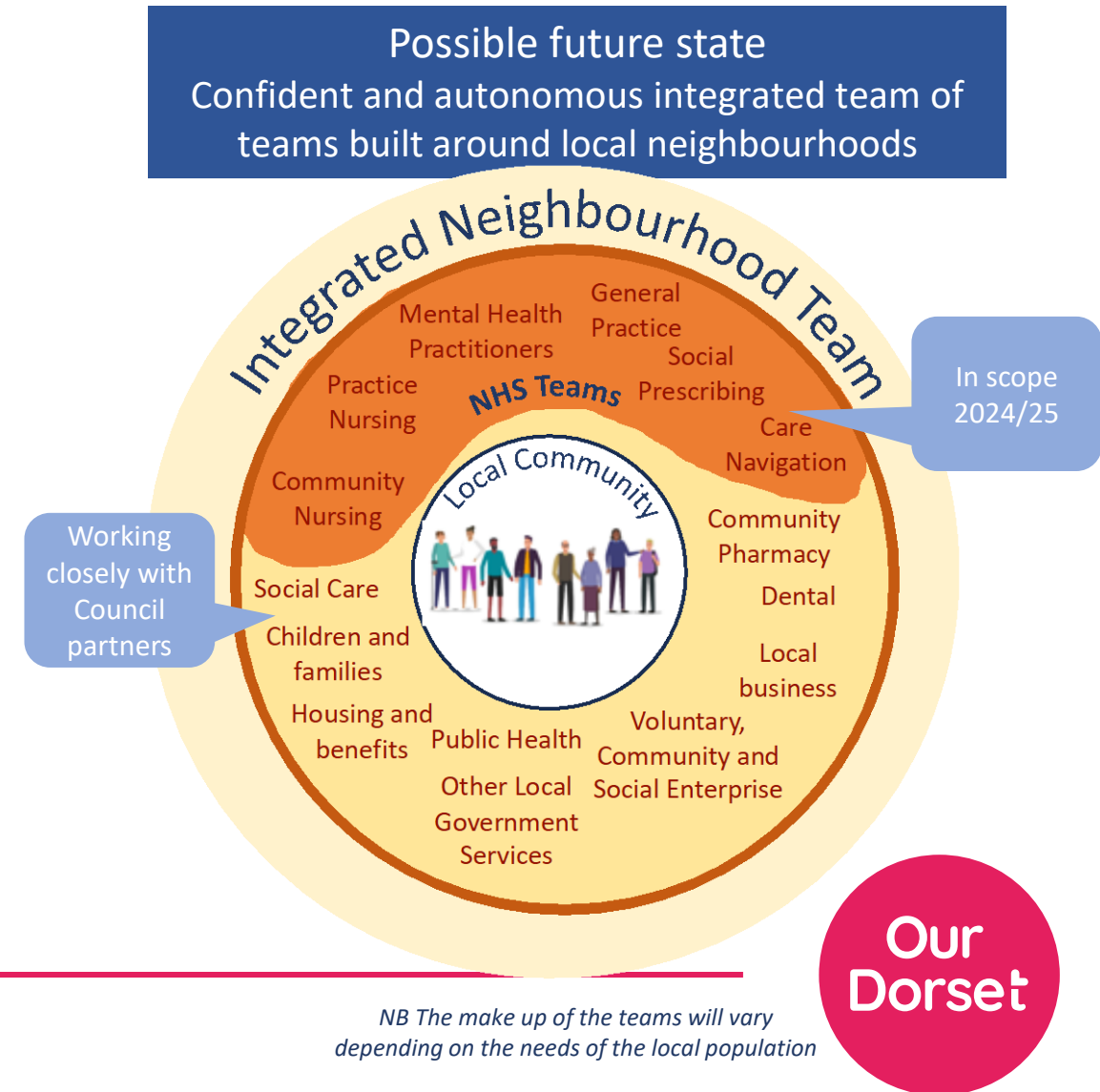


To enable the NHS to be able to engage smoothly with Council and wider partners, in 2024/25 we are bringing together the NHS teams at a Neighbourhood level

Creating integrated health care teams with a focus on primary and community care so that we can create the right structures, conditions and environment to better work with social care and we are better placed for a shift of care into the community.

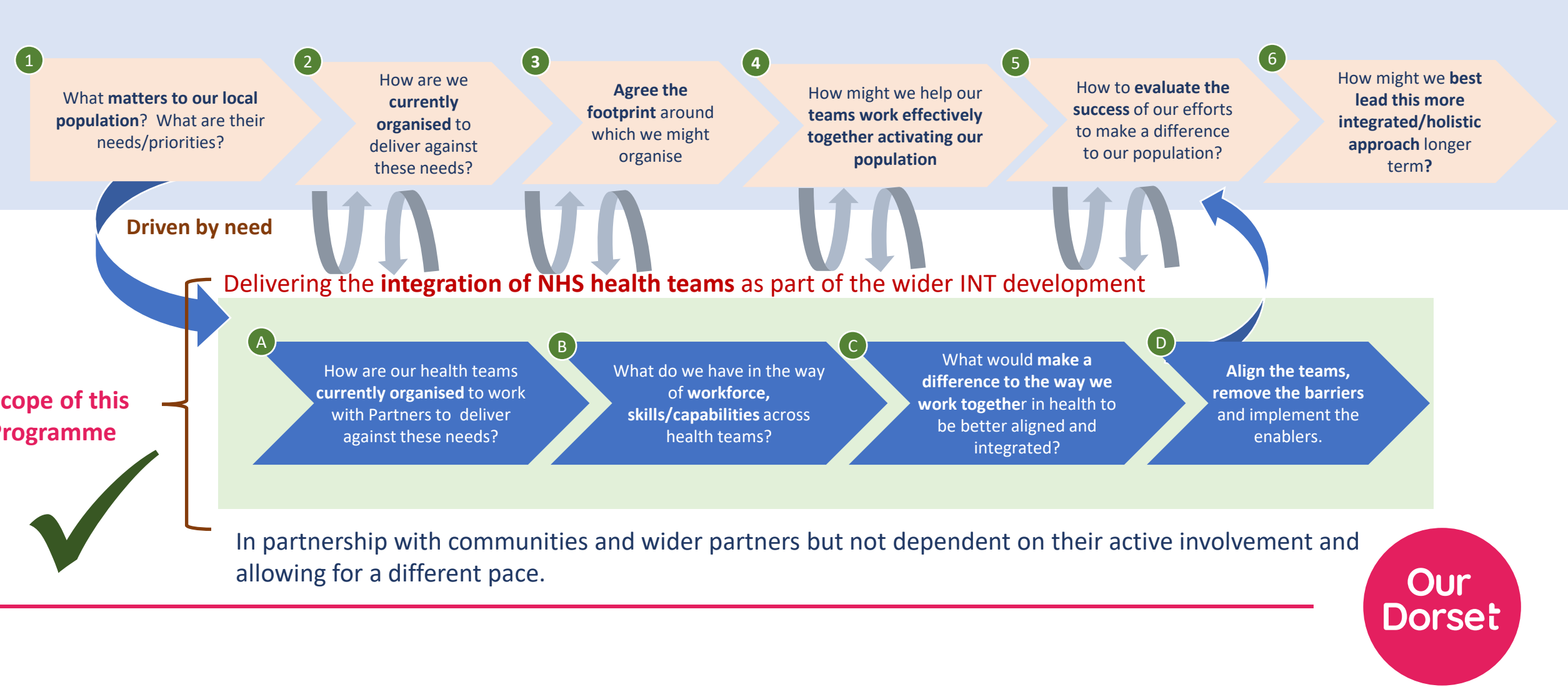
This means:

1. We are **realigning and integrating the NHS** elements of Neighbourhood care
2. We are **simplifying the contractual and operational processes**
3. We are **supporting the development of flourishing Neighbourhood Teams**
4. We are enabling the NHS to **work better with wider partners**
5. We are **assuming the boundaries for Neighbourhood footprints will be based upon the views of people of Dorset** and may evolve over time

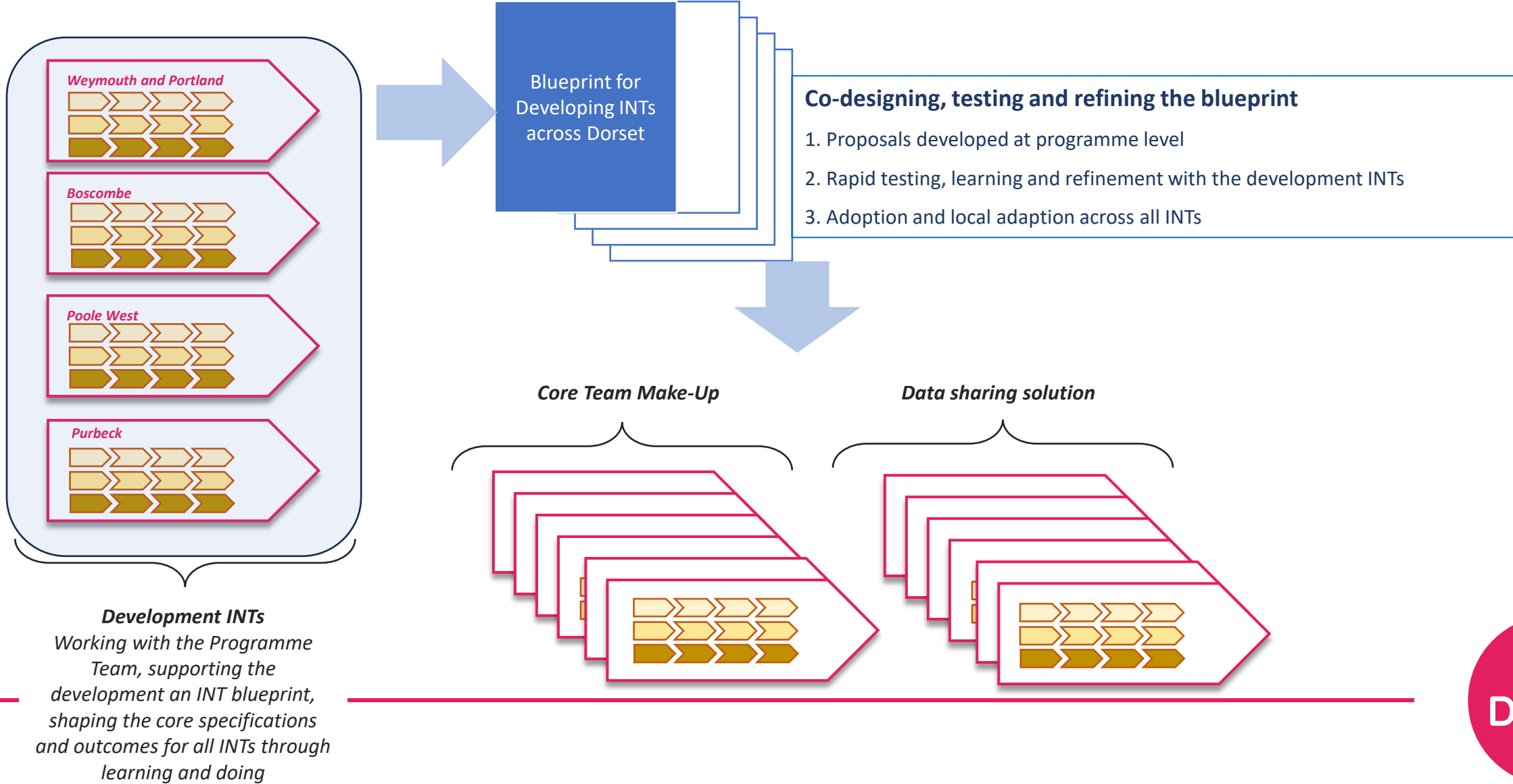


Understanding how we can focus on the necessary integration of health teams through 2024/25 AND develop the wider ambition

Outline journey to delivering the full **Integrated Neighbourhood Team** ambition

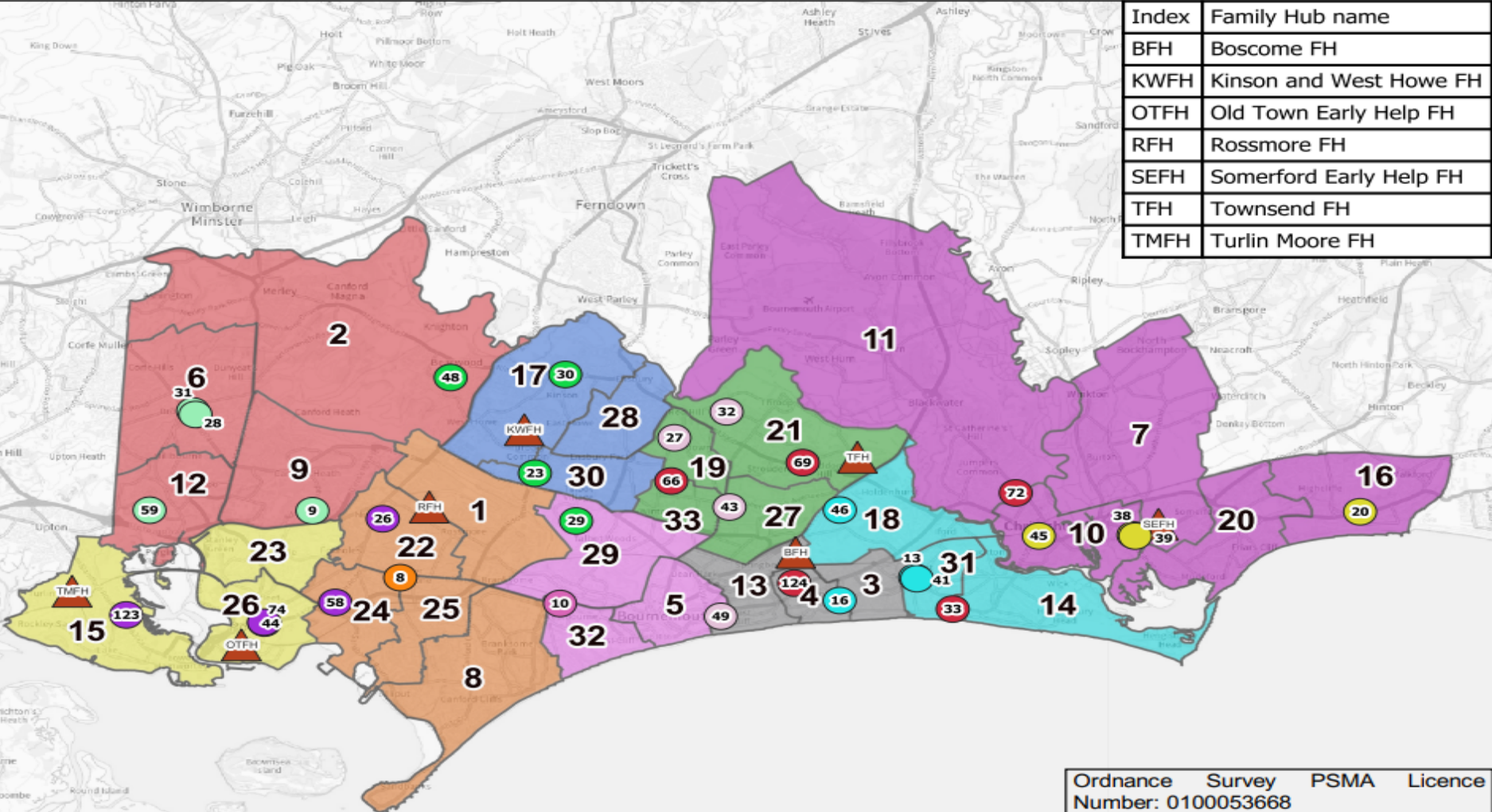


Developmental approach to Health Team Integration



INT Footprints within Bournemouth, Christchurch and Poole

Bournemouth, Christchurch and Poole - Wards (Groups) including GP practices (PCNs) and Family Hubs



Index	Family Hub name
BFH	Boscome FH
KWFH	Kinson and West Howe FH
OTFH	Old Town Early Help FH
RFH	Rossmore FH
SEFH	Somerford Early Help FH
TFH	Townsend FH
TMFH	Turlin Moore FH

Legend

Wards (Groups & population)

GP Practice (PCN split)

Family Hubs

ONS population estimates Mid 2022 - Wards 2023 released on 19 March 2024.

Total population: 401,898



Ordnance Survey PSMA Licence
Number: 0100053668

Date Published: 06/06/2024

Created by: Krzysztof Cepa

Approach to measurement



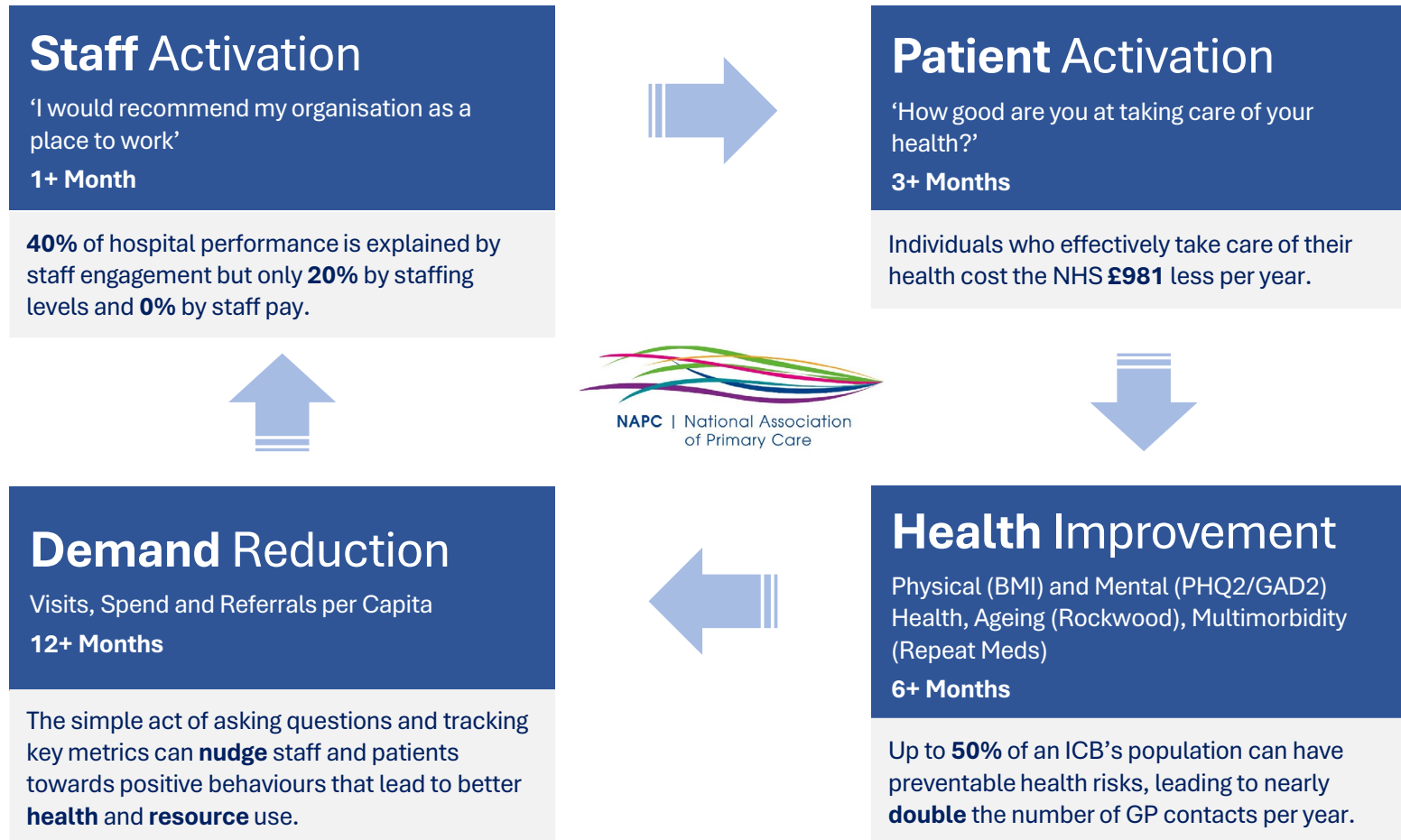
We need to develop and agree the outcomes and success measures overall and with each INT

Balancing the system wide and local perspectives, we propose to work together with key stakeholders and early wave INTs to agree a small set of **core measures** linked to overarching strategic outcomes, and establish measures that are **locally-relevant** to local populations and their needs



Our emerging metrics align with some of the research from the NAPC that shows that activating Staff & Patients can Reduce Healthcare Utilisation

A Simple Set of Metrics to Support Innovation



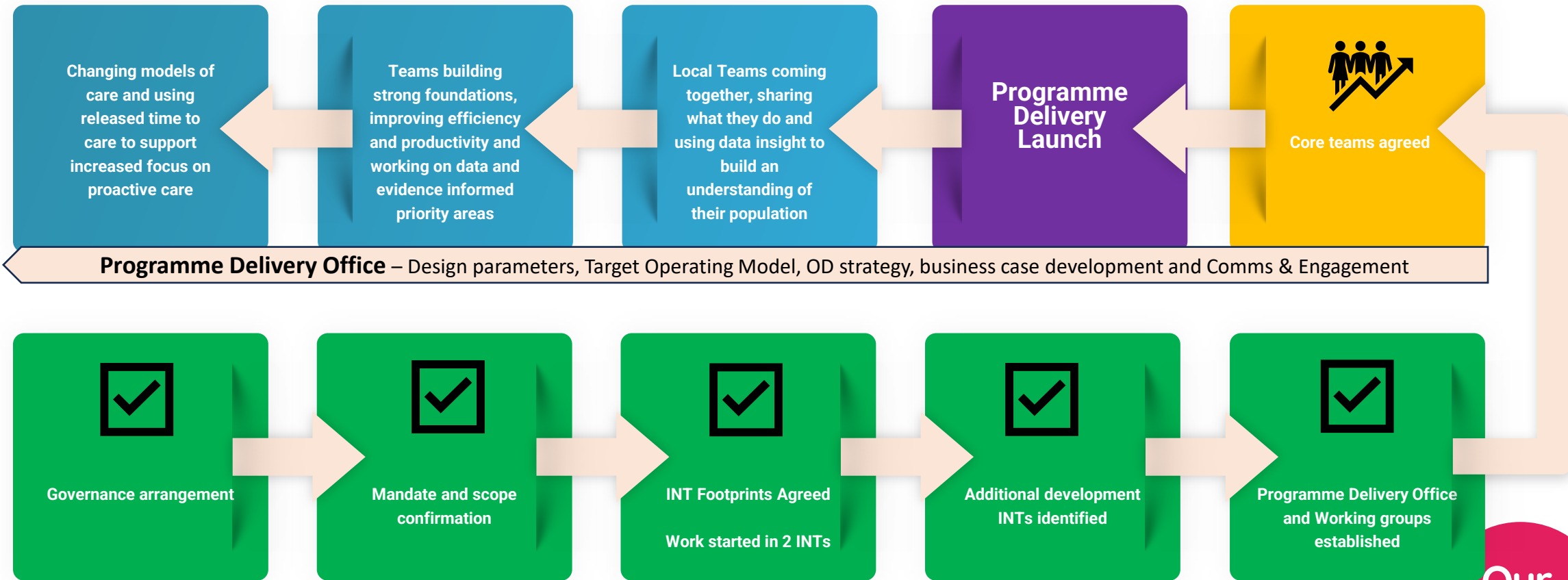
Start small with high-ROI interventions, building evidence and momentum for larger-scale transformation.



Focus on improvement, not comparison. Celebrate regions with the biggest activation and health improvements to identify the **very best** practices for national improvement.

Progress to date

INT development - first phase



Boscombe Update

- Initial design stakeholder workshops convened
- Data insights used to inform initial opportunities for more integrated approach
- Key emerging areas
 - Mental Health – focus on depression
 - Long Term Health conditions – focus on diabetes (under 40 years)
 - Addiction including co-morbid mental health presentations
- Wider opportunities
 - Homelessness provision
 - Immunisation and vaccination
 - Children & Young People
- Refining ‘who’ is in the core team to address identified initial opportunities
- Engagement with local community
 - Co-produced survey being developed (Health, LA, VCSE & Community Groups)
 - Community Conversations approach – training for local VCSE scheduled to take place in October
- Next Steps
 - Bringing existing teams together
 - Set the foundations and principles for integrated team approach
 - Design the way the integrated team will operate

**All data in this report has been obtained from the Diis and is correct as of September 2024*



Poole West Neighbourhood

In addition to Boscombe we are starting to work with Poole West as part of the group of development INTs.

Poole West has a combined population of 39,888 and includes the three wards of:

- Hamworthy
- Poole Town
- Oakdale

There are Family Hubs in Hamworthy and Poole Town

This area incorporates four Primary Care Networks within its boundaries:

- Poole Central
- Poole North
- Purbeck
- Shore Medical



**All data in this report has been obtained from the Diis and is correct as of September 2024*

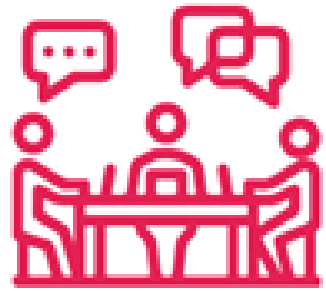
Our
Dorset

Community Engagement workstream update

Objectives for Community Engagement workstream

- Develop a community engagement model that provides qualitative data on what is important to people's health and wellbeing across each neighbourhood.
- Ensure that the model is able to be replicated in each neighbourhood in BCP.
- That any project is able to be resourced effectively and delivered on time.
- The project engages with health, VCS and council partners across the BCP area.
- Can be delivered alongside other integrated neighbourhood workstreams, such as the development of the Access to Wellbeing Hub, datapacks and workforce mapping

Community Engagement approach



Establish
Working
Group

Review
existing
insight



Broad
Approach

Survey -
reaching
out to all



Deep Dive

Community
conversations
- case studies



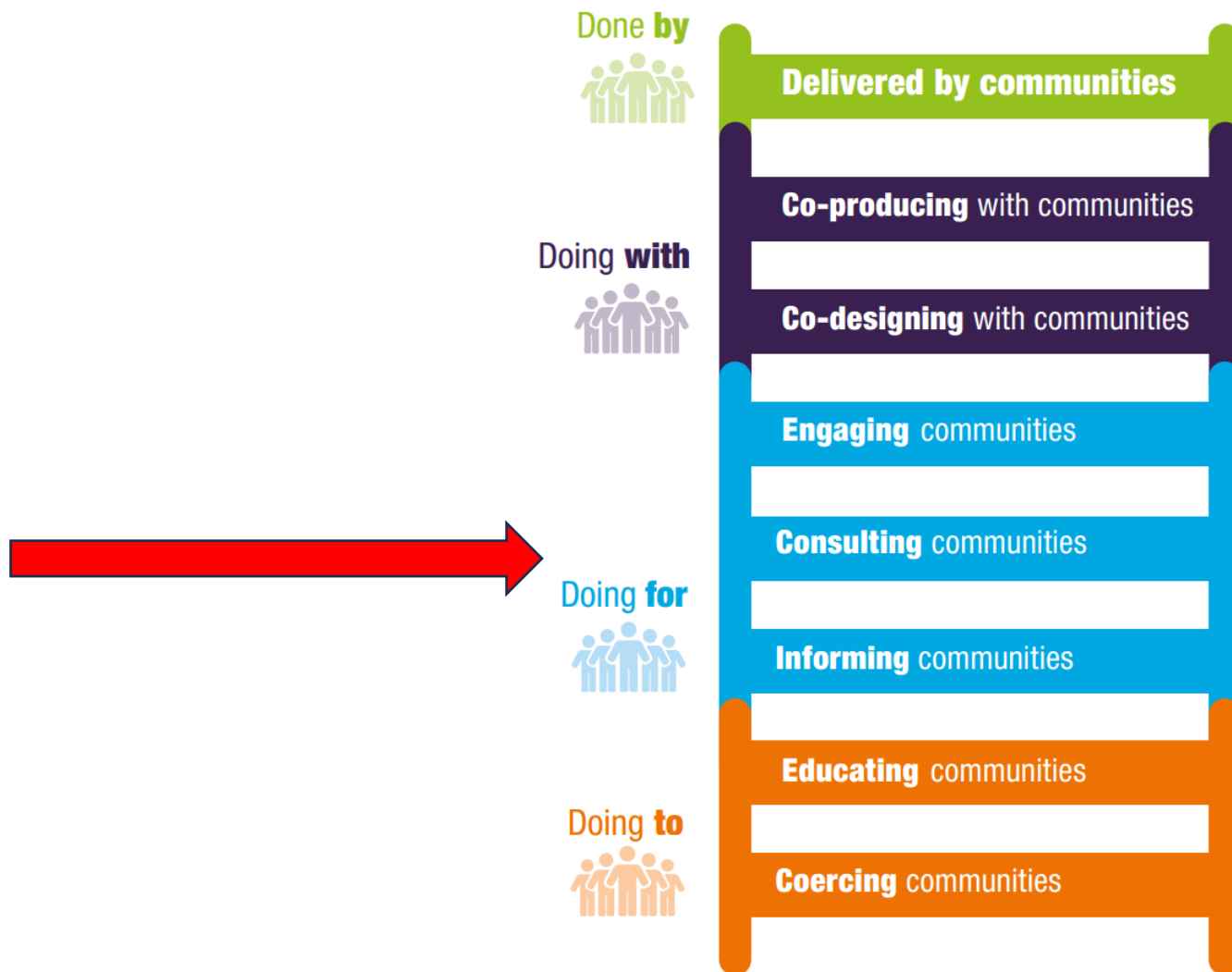
Analyse
and
Report

Feedback to
local people

Our
Dorset

INT Community Engagement Workplan

Comms and Engagement	Introduction stage	Local Intelligence - local visit / walkabout
		Arrange 1 to 1 meetings with local community providers related to neighbourhood
		Establish an engagement working group (NHS local providers, BCP Council) & Community leaders)
		Develop communication plan for neighbourhood - to include key meeting places/Comms messages
		Conduct research to gain Community insights that have occurred recently - what's worked/hasn't
	Survey stage	Design localised survey questions to add to generic survey (neighbourhood dependant)
		Understand capacity for service delivery - who/ where doctors surgeries, community hubs etc.
		Survey delivery, Communicate in neighbourhood
		Review survey uptake weekly & report back uptake.
		Attend local pop up events etc to gain further survey uptake insights
	Deep dive/Community conversations	Establish working group to identify whose detailed stories to capture - through community conversations
		Identify resource requirements (trained reviewers)
		Conduct community conversations (conversations and transcription)
		Review survey results to identify further participants from low uptake or diverse applicants
		Provide synopsis/case study of each conversation - using AI software
		Case study to be approved for sharing with interviewee
	Analyse & report	Collate final report of survey findings
		Collate 10 case/studies synopsis's into a report
		Provide series of recommendations to INT
		Report back to survey respondents
		Close & lessons learnt for other neighbourhoods



Questions for the Health and Wellbeing Board

- What role should ward councillors play within the development of the engagement workstream, as well as wider INT development?
- How can we ensure that any recommendations are adopted by BCP Place-Based partnership and/or individual INT's?